



# IMMUCARE

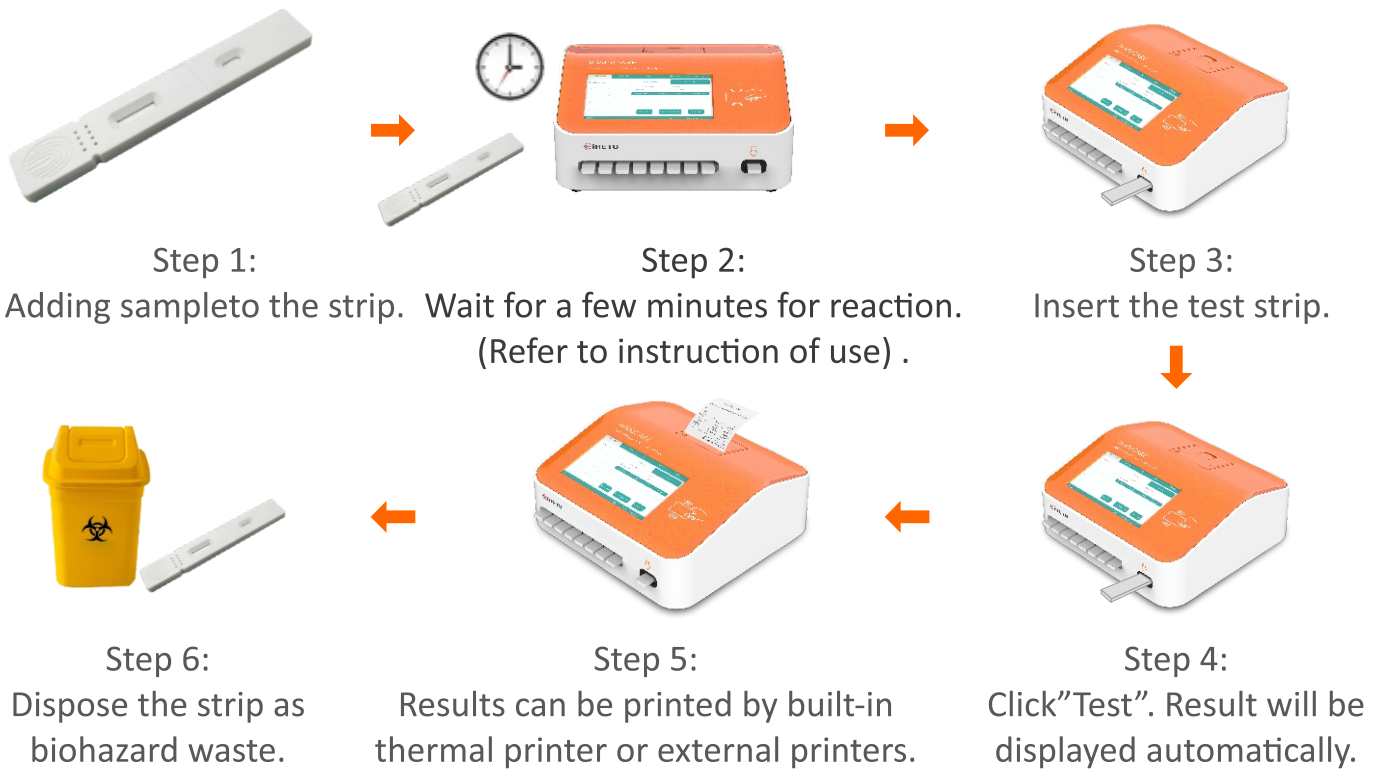
## POCT Fluorescence Immunoassay Analyzer



## Specifications

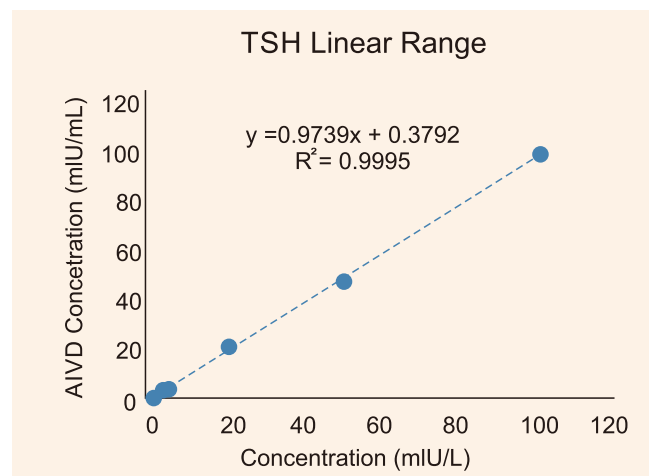
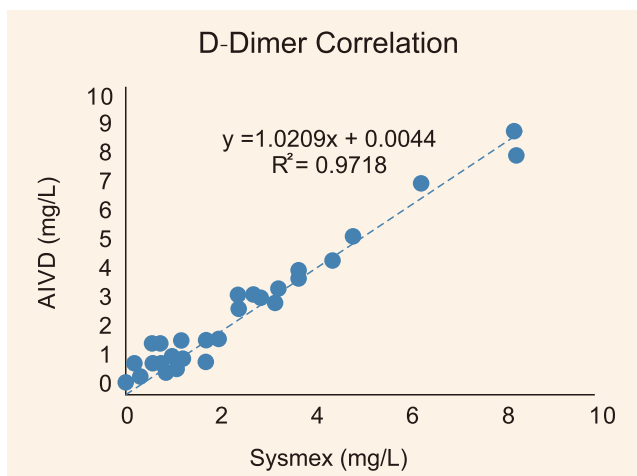
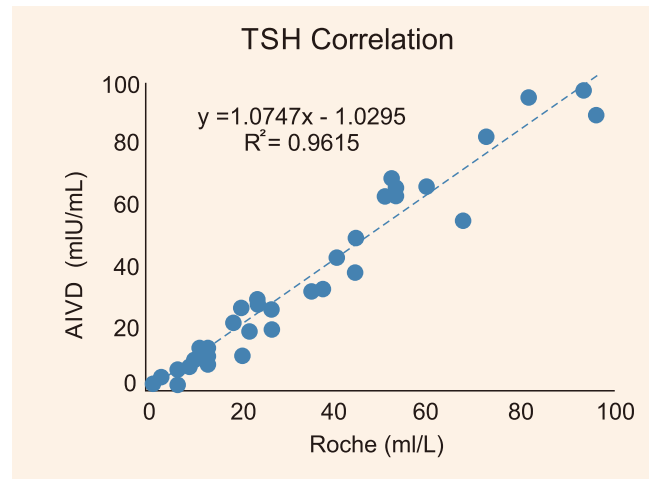
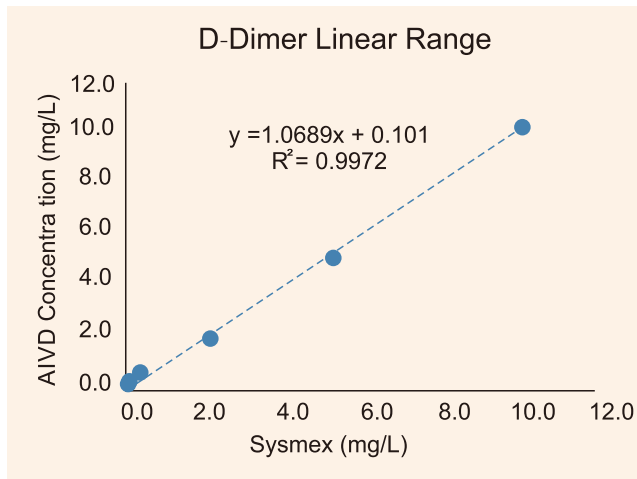
- ▶ Measurement mode: Standard mode and Fast mode
- ▶ Detection wavelength: excitation wavelength 365nm, fluorescence wavelength 612nm
- ▶ (other wavelengths can be configured)
- ▶ Operating software: Linux operating software
- ▶ One step input sample information by QR code
- ▶ Calibration information input automatically by RF card
- ▶ Printer: thermal printer
- ▶ Input: 7.0-inch TFT touch screen, mouse or keyboard can be connected via USB
- ▶ Memory: no less than 10,000 sample results.
- ▶ 8 Built-in Incubators
- ▶ Room temperature shipping and storage
- ▶ Size: 190mmx220mmx280mm
- ▶ Power supply: DC 24V3A

# Easy workflow



**POCT Fluorescent Immunoassay Quantification Platform. Precise, Fast and Compact.**

## Performance Data:



# Test Menu

---

## Fertility

CORTISOL  
LH  
FSH  
PRL  
Prog  
TESTO  
E2  
HCG  
AMH

## Cardiac Marker

Myo  
CK-MB  
NT-proBNP  
D-Dimer  
H-FABP  
cTnT  
cTnI

## Thyroid

TSH  
T3  
T4  
FT3  
FT4

## Kidney shaped gland

MAU  
NGAL  
Cys-C  
B2M

## Inflamation Monitoring

PCT  
CRP  
IL-6  
SAA

## Digestive tract

TRF  
FOB

## Bone Metabolism

25-OH-D

## Anemia

Ferritin

## Blood glucose

HbA1c

Note:Quality control are available



**Shenzhen Heto Medical Tech Co.,Ltd**

Room 1313, 1314 ( 13th floor, Room 1301-1315), Unit E, Building No. 3, Yunzhi Science Park, Shuangming Road South Side, Dongzhou Community, Guangming Street, Guangming District, Shenzhen City, 518107, China

+86-755-28935967 +86-755-28937587 sales@hetomedical.com www.hetomedical.com